



# FUSION POWER

the perfect 'fusion', - Gary Lidgard, - Matthew Morgan - Craig Loomes - Fusion Catamarans

# Externally



The Fusion has been voted the most striking new, powered multihull to be launched in the last decade.

Not only does she look good, she has performance to match. By bringing together the specialist designers of Loomes/Lidgard/Morgan guaranteed something special. The photos opposite show the vessel at a constant 22 knots and the fine bow sections guarantee clean entry without the familiar power boat pounding or the aft misting.

The vessels deck layout was designed to offer ease of mobility with wide side decks, flat foredecks and large comfortable nets for family relaxing. The cockpit is designed to entertain a dozen or more for that special part of the day when the "sundowners" are poured.

With the long distance cruiser in mind, you have the choice of using smaller motors and economical cruising can easily be achieved, and even on one motor the boat still performs beautifully.

High bridge deck clearance guarantees comfortable motoring at sea, and the large transom steps ensure easy access from marina or dinghy.

The all weather flybridge affords perfect visibility to all corners of the boat, making berthing and picking up moorings a cinch.

The cockpit itself can also be optioned as 'all weather', with full clear curtains and zippered entrances.



# Internally

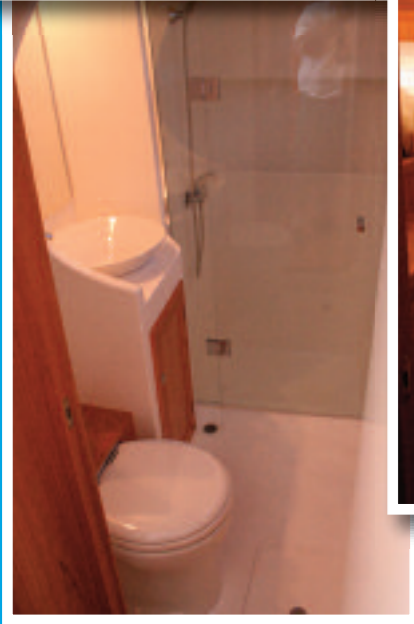
The interior of the Fusion Power cat has the same wonderful flexibility as the Fusion Sailboat, where you have full control over the layout, materials and also the equipment being installed. Yes it is fully Customisable.

The standard layout provides for 3 Queen sized berths, an ensuite in the Guests cabin, starboard forward, a second private cabin Aft with queen sized berth and plenty of storage space in the hulls. The owner's side, (port) has walk-in wardrobe and complimented with a full sized bathroom toilet and shower. The hull can be equipped as an office or navigation centre

The Power Cat saloon offers an additional 6" headroom forward due to the flybridge configuration and together with the massive beam allows for an impressive Saloon complimented by a full galley, including full sized stove/grill/oven, 2 bowl sink, marble counter tops, 4 drawer freezer fridges, ice maker and wine cabinets.

Floors are laid timber, and the floor level lighting simply compliments the wonderful zone controlled, Fusion sound system.

This is cruising 5 star.



# Specifications

## FUSION POWER

LOA 12.2mts / 40ft

BOA 7.2 mts / 23'4"

Draft 800mm / 35.43"

Bridgedeck 900mm / 32"

Fuel 940lts / 248 gals

Water 600lts / 158 gals

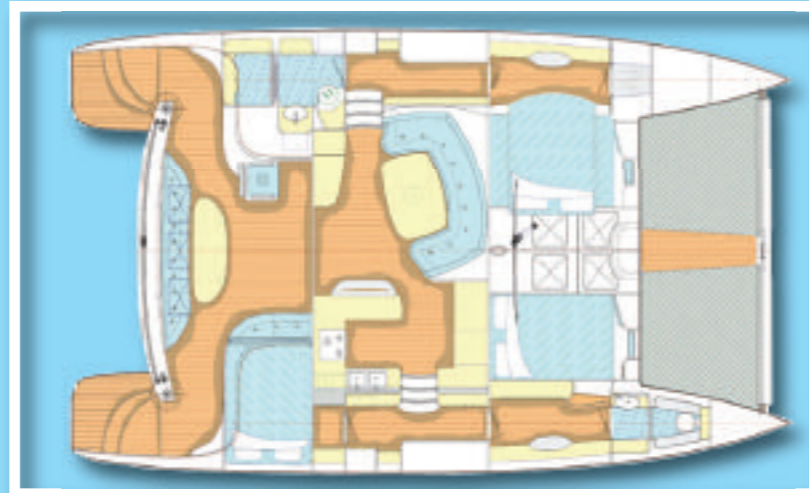
Accommodations: Can sleep up to 10 people

Engines 2 x (150/180/220/260)hp Yanmars

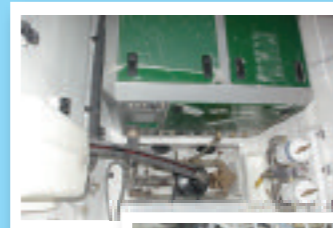
Shipping 3 x 40ft containers

Accommodations: Can sleep up to 10 people

Please contact your local Agent for specific information as models and equipment vary between the different countries.



"Island", 3 Berth Layout.  
There are many options available for the interior of the Power Cat as with the Sail version



'Get the Power' [www.fusioncats.com](http://www.fusioncats.com)